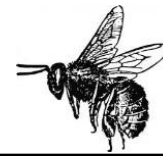


# Hive Inspection Sheet



**Date:** \_\_\_\_\_ **Hive ID:** \_\_\_\_\_

Looking at...				Possible Actions Needed <small>(circle all that apply)</small>	Done?			
<b>Hive weight:</b>	Light <small>~20 lbs</small>	Normal <small>~40 lbs</small>	Heavy <small>~80 lbs</small>	Feeding needed				
<b>Worker population:</b> <small>(percentage of brood frames covered with workers)</small>	Low <small>~20%</small>	Moderate <small>~40%</small>	High <small>~80%</small>	Split needed				
				Swap brood frames with strong hive				
				Add entrance reducer				
				Add brood super				
<b>Laying pattern:</b>	Good <small>solid, uniform</small>	Okay <small>intermittent, random</small>	Bad <small>spotty -&gt; check for varroa</small>	Combine with strong hive				
						<b>Eggs present?</b>	Yes	No
						<b>Larvae present?</b>	Yes	No
						<b>Capped brood present?</b>	Yes	No
						<b>Queen seen?</b>	Yes	No
<b>Queen cells present?</b>	Emergency Cell <small>cells go out, down from existing worker cell</small>	Swarm Cell <small>often at edges/bottom of frame &gt;3 cells</small>	Supersedure Cell <small>often on face of frame 1-3 cells</small>	Replace queen				
<b>Hive temperament:</b>	Calm	Nervous	Nasty					
<b>Honey stores:</b>	Low	Normal	High					
<b>Pollen stores:</b>	Low	Normal	High	Feed: Sugar water / Pollen				
<b>Odor:</b>	Normal	Foul	Fermented					
<b>Small hive beetles present:</b>	none	a few	a lot	Install hive beetle trap				
				Treat with parasitic beetle-eating nematodes				
<b>Varroa mite symptoms/presence:</b>	# mites-sticky sheet: <small>Treat if &gt;180 mites after 3 days</small>			Install sticky sheet to monitor Varroa				
	# mites-powdered sugar roll: <small>Treat if &gt;18 mites</small>							
	K-wing present					Add drone comb for removal		
	Uncapped brood <small>(chewed off by workers)</small>							
	Varroa on drone brood							
<b>Honey flow preparation:</b> Spring (~March) / Summer (~September)				Add queen excluder				
				Add honey super(s)				
<b>Honey harvest:</b>				# honey supers removed:				
				Pounds of honey extracted:				
<b>Equipment condition:</b>				Replace equipment:				

**Notes:**

Blooming now:	European Honey Bee Development Times			
		Egg	Larva	Pupa
Queen	3 days	5.5 days	8 days	~16 days
<b>Worker</b>	<b>3 days</b>	<b>6 days</b>	<b>12 days</b>	<b>21 days</b>
Drone	3 days	6.5 days	14.5 days	24 days